



Central  
Laboratory



Up to 400 tests per hour\*

43 reagents and 49  
samples on-board

Reliable Stanbio Chemistry reagents

Integrated cuvette washing station

User-friendly interface with  
LIS bi-directional connectivity

# Altair™ 240

Fully-automated  
clinical chemistry analyzer

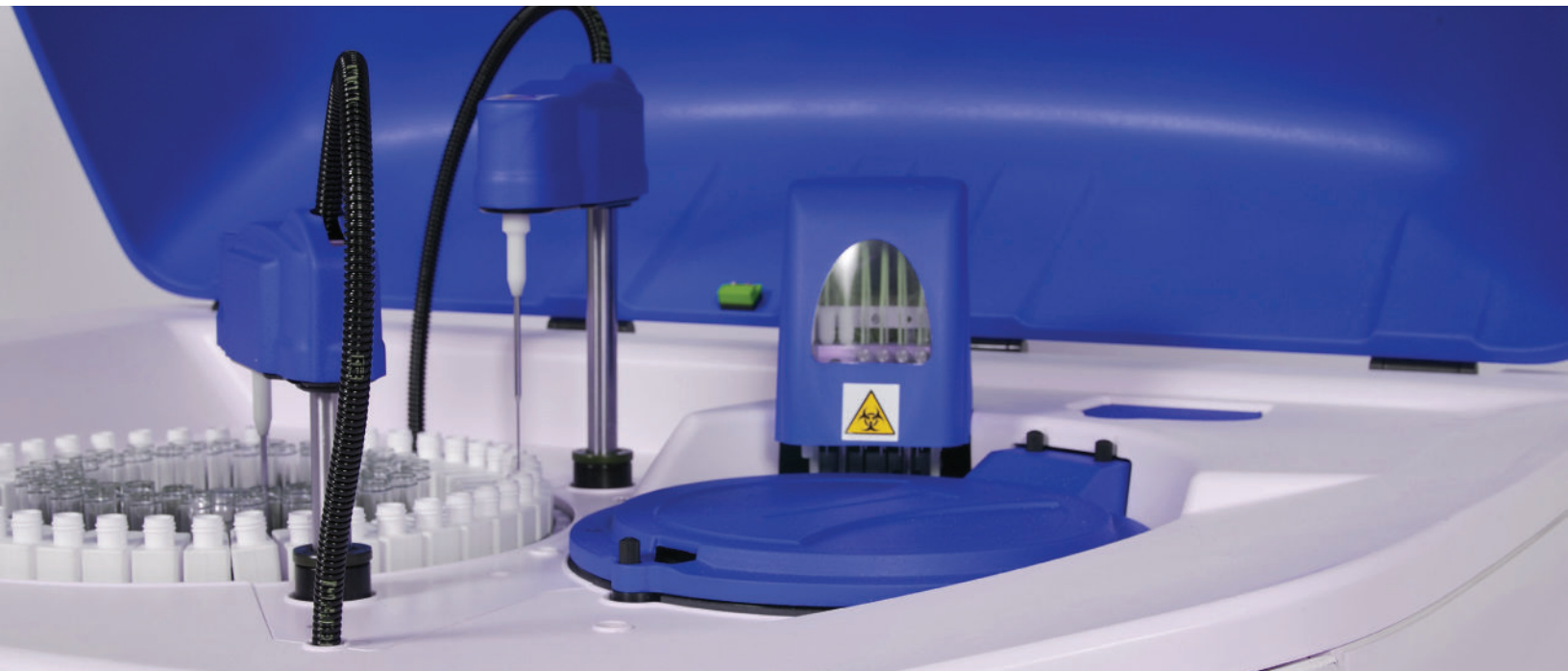
Chemistry



Central  
Laboratory



# Feature-rich functionality

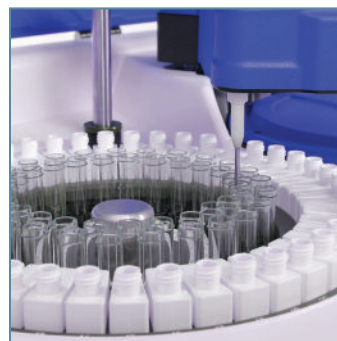


- Integrated level and position sensors for sample and reagent arms
- Integrated barcode reader for positive identification of samples and reagents
- Integrated high-precision, maintenance-free micro pump
- Automated cuvette washing system
- LIS bi-directional connectivity
- Calibration with linear/non-linear curves up to 8 points, auto dilution, calibration curves (linear regression, cubic spline, polynomial)
- Control menu with Levey-Jennings graphs



## Reagents

- 43 reagent positions
- Bar-coded liquid, ready-to-use reagents
- Continual 24-hour on-board cooling



## Samples

- Adaptive for various size primary tubes (12mm, 13mm)
- 49 patient positions
- Integrated bar code ID reader
- STAT interruption permitted during analysis



# A high performing and cost-effective platform



## **Convenience and flexibility**

Altair™ 240 is a compact, reliable and fully automated random access benchtop analyzer. The Altair™ 240 is supported by a full-range of bar-coded, liquid-stable, ready-to-use Stanbio Chemistry reagents.

With positions for 43 reagents and the ability to configure open channels for your esoteric testing needs, the Altair™ 240 provides a comprehensive solution tailored to meet the needs of your laboratory.

## **Automated performance**

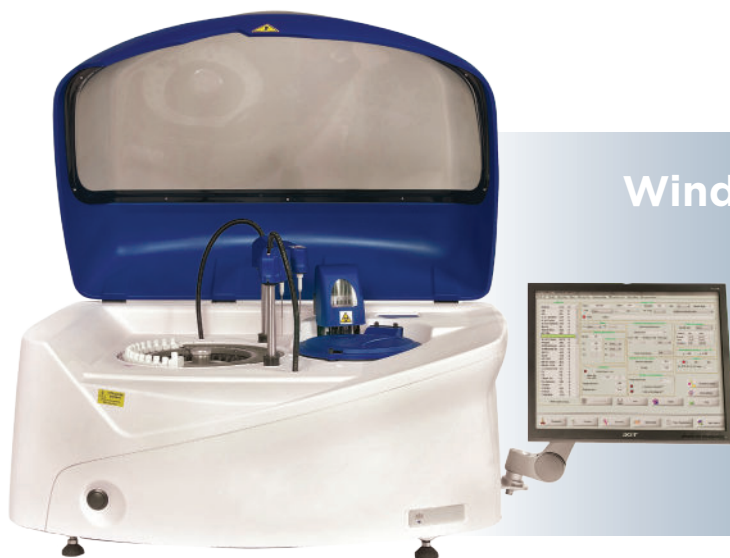
The Altair™ 240 automatically reads and manages barcoded reagent bottles and sample tubes. Most reagents have 30-day on-board stability to minimize waste.

The intuitive Windows®-based software screens make learning and operating the analyzer quick and easy.

## **Efficiency**

The Altair™ 240 can run at a blazing 400 tests per hour with an optional ISE module. Dual reagent probes translate to higher throughput and faster patient turn-around time.

The increased efficiency of reusable cuvettes translates into lower operating costs for your lab.



## **Windows®-based Altair™ 240 interface**

- Intuitive touchscreens
- Easy to learn and use
- Auto-re-run with auto-dilution
- Graphic representation of work session
- Real-time check of liquid levels and patient results
- QC with Levey-Jennings graphs on three levels



# Altair™ 240 product specifications

## Throughput

- Double-arm functionality yields up to 400 tests per hour\*
- Up to 240 tests per hour w/o ISE
- Integrated ISE module for Na<sup>+</sup>, K<sup>+</sup>, Li<sup>+</sup>, Cl (optional)

## Reagent system

- Liquid ready-to-use Stanbio reagents
- 43 reagents on board plus diluent
- 30-day onboard stability for most reagents
- Automatic inside and outside probe washing after each reagent addition
- On-board reagent cooling 14 °C below ambient temperature
- Reagent volume: 1 to 400 µL
- Water consumption: 4.5 liters per hour

## Sampling unit

- High precision micro-metering pump to dispense reagents and samples (no syringe)
- Sample containers:
  - Standard cup
  - Blood collection tubes:  
12x75 mm, 12x100 mm,  
13x75 mm, 13x100 mm
- Integral barcode reader for primary tubes
- Sample volume: 1 – 300 µL
- Auto re-run capability
- STAT interruption permitted during analysis
- Automatic inside and outside probe washing after each sample addition
- Automatic sample dilution

## Reaction unit

- 80 semi-permanent plastic cuvettes
- 37 ± 0.1 °C reaction temperature
- Automatic cuvette washing system
- Typical reaction volume: 200-250 µL

## Optical absorption measuring unit

- Direct measurement of reaction cuvette
- Monochromatic and bichromatic measurement
- Wave lengths: (8 discrete) 340, 405, 492, 505, 546, 578, 630, 700 nm
- Tungsten halogen lamp
- Photometric linearity: 0 to 3.0 OD

## Software

- Windows® 8 operating system
- All-in-one touchscreen computer
- LIS bi-directional connectivity
- Programmable instrument stand-by and wake-up functions
- Display of quality control levels with Levey-Jennings graphics
- Self-diagnosis and alarm procedures are an integral part of the Altair™ 240 software
- Customizable profiles to easily manage workload
- Powerful, expandable archive for patients test results and QC results
- Active monitoring of reagents and main instrument liquid levels
- Water supply, wash solution, and waste level tank alarms

## Physical specifications

- Dimensions: 93 x 72 x 60 cm
- Ambient temperature: 18-32 °C
- Power supply: AC 110 - 240V 50/60 Hz
- Weight: 60 kgs

## Integrated ISE module

- Auto calibration
- Individual electrode replacement
- Easy operation
- Easy servicing

\*with optional ISE module

Distributed by



ISO13485:  
2012/2003 Certified.  
Registration ref:  
MD 505902

EKF Diagnostics / Stanbio  
1261 N. Main Street  
Boerne, Texas 78006

1-800-531-5535 (U.S. Toll free)  
830-249-0772

[www.ekfdiagnostics.com](http://www.ekfdiagnostics.com)

Chemistry



Central  
Laboratory