

## BioMonitor SmartLead

852, 270S



### Applications

- Biofeedback for training levels
- Physiological status monitoring

### Description

The BioMonitor sensor is designed to detect the ECG, respiration rate and body temperature of the user utilizing only three electrodes. The BioMonitor produces five simultaneous real-time data streams including ECG, heart rate, R-R intervals, thoracic impedance (respiration), and respiration rate.

### Features

- ECG
- Heart rate
- R\_R intervals
- Thoracic impedance
- Respiration rate

### Required Software

- MR3.12 or newer
- myoMuscle Module

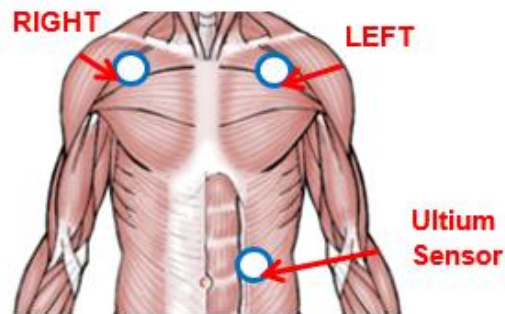
### Specifications

Parameter	Value	Units
Input channels	ECG Respiration	-
Sample rate	500 / 1000	Hz
Input range	± 24,000	uV
Analog output scale factor	0.208	mV/uV



### Physical Dimensions

Parameter	Value	Units
SmartLead	11.9 x 1.9 x 1.1	cm
	5.7	g
Single electrode diameter	38.5	mm

### Common electrode placement



### Ordering Information

Device	Image	Catalog No.
BioMonitor SmartLead		852
Single Lead Electrode (solid gel)		270S