



NEW

E-paper display for
easier viewing

NEW

Ergonomic design,
small, light and
robust

Lactate Scout Vet

Accurate lactate measurement
to drive animal care decisions

- Result in 10 seconds
- Only a single drop of blood required
- Simple to use

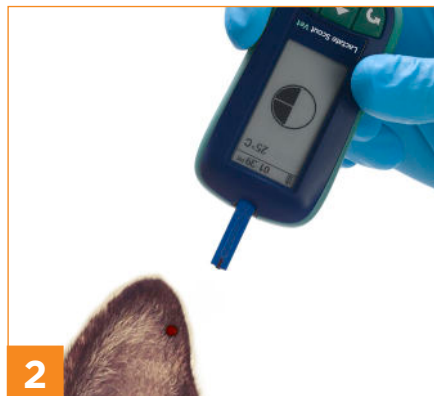


Easy to use	<ul style="list-style-type: none"> • Insert/remove test strip to turn on/off • Select animal species • Only 0.2 µl of capillary or whole blood required • Pre-calibrated test strips • Device calibrated by simple coding • Lactate concentration, date/time, measuring mode, temperature and memory ID on a single display • Automatic self test
Fast and accurate	<ul style="list-style-type: none"> • Enzymatic amperometric detection method • Results within 10 seconds • Measuring range: 0.5 – 25 mmol/L • Lactate Scout Check Solutions available for function control
Example applications	<ul style="list-style-type: none"> • Prognosis and diagnosis of a variety of animal health conditions (such as shock, severe sepsis, low cardiac output, liver failure, poisoning, and drug therapy) • Assess the effects of preslaughter handling and transport stress • Performance diagnostics for high performance and race horses
Practical and reliable	<ul style="list-style-type: none"> • Stores up to 500 results • 1,000 tests using just 2 x CR2450 batteries • Pocket-size: 91 mm (h) x 46 mm (w) x 21 mm (d) • Lightweight: 60 g • Operating range: 10 – 45°C and max. 85% humidity

Catalog No.	Name
7023-0511	Lactate Scout Vet
7023-3421	Lactate Scout Test Strips
7023-6173	Lactate Scout Vet Check Solution Duo-Pack



1 Remove test strip and place into analyser.



2 Position the tip of the Lactate Scout Test Strip on the sample site and collect blood by touching with test strip.



3 Result appears in 10 seconds.

Distributed by

Manufacturer
SensLab GmbH
Bautzner Str. 67
04347 Leipzig
Germany

+49 (0) 39203 511 0
sales@ekfdiagnostics.com
www.ekfdiagnostics.com